



# THE AVENUE

HINJEWADI



RETAIL STORE & OFFICE SPACES NEAR INFOSYS, HINJEWADI - PHASE 2



# THE AVENUE

HINJEWADI



MORELLIAT STORE BE A SPORT CATCHY DESIGN LUCKY BAG SKYLER LUCKIN COFFEE WATCHMAKER MULBERRY THE HANGER FASHION CLOTHS FREESTYLE CLASSIC F & F ELEGANT GRACE

GREEN CARROT ARROWS CLUB GLAMOUROUS MORELLIAT STORE BILLY REID FASHION HUB CLUB COFFEE FORCAST HUB GREEN CARROT ARROWS CLUB GLAMOUROUS SHOE BAZAAR BOOK STORE

STYLE STUDIO LOOK @ ME DASSY BELLY BOUTIQUE K RAGE FASHION CHAI POINT ONTIME ESSA VINTAGE VOILET SUPERME STUDIO PINK BLUSH CLOTHING ESSA ARROWS CLUB



● SHOWROOM ● SHOPS ● RETAIL ● OFFICES ● RESTAURANTS



# THE AVENUE

HINJEWADI

COURT  
CATCHY DESIGN  
LUCKY BAG  
SKYLER  
LUCKIN COFFEE  
WATCHMAKER  
MILBERRY  
THE HUNTER  
ASSEMBLING  
BEGEM  
BENKAT  
REPCORP

ARROWS CLUB

GLAMOUROUS

MORELLIAT STORE

BILLY REID

FASHION HUB

CLUB COFFEE

FORCAST HUB

OSHEL PRAGON

PARAGONS

REPCORP

REPCORP

BOUTIQUE K

RAGE FASHION

CHAI POINT

INTIME

PACKAGE HOTEL

REPCORP

LOOK @ ME

SPORT

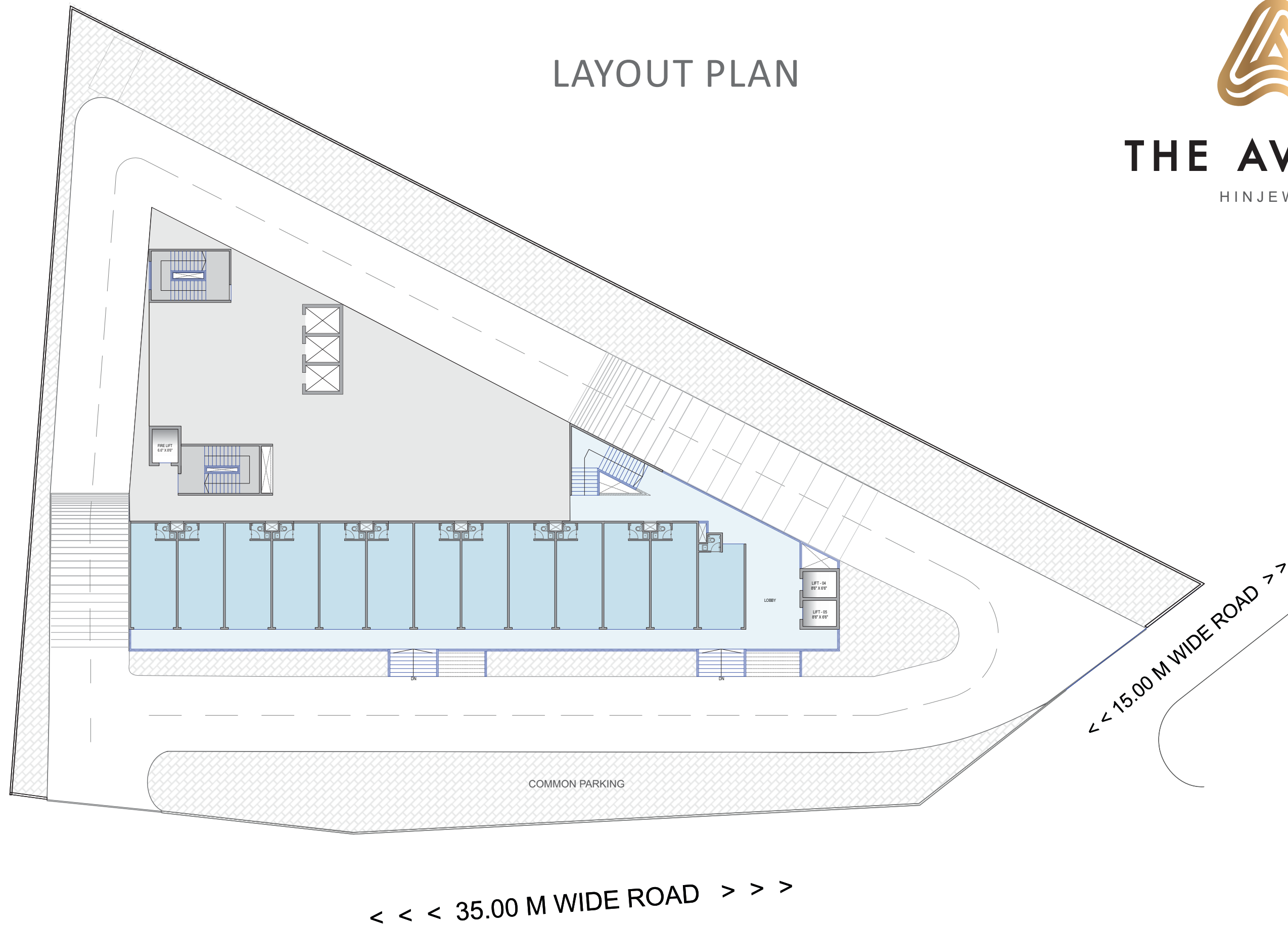
- Retail Shops
- Restaurants
- Office Spaces
- Exclusive Showrooms

# LAYOUT PLAN



## THE AVENUE

HINJEWADI



**Kindly Note:** This drawing is only for presentation purpose in order to suggest furniture placement ■ Structural columns are not shown in the above drawings. Please refer to RCC drawings for the same ■ Shops & Office sizes include the plaster & skirting thickness hence might be smaller by about 3-5%.

# LEVEL - 1



## THE AVENUE

HINJEWADI

Shop No.	Carpet Area	Loft	Total Carpet Area
	sq.ft	sq.ft	sq.ft
01	255	-	255
02, 03, 04, 05, 06, 07, 08, 09, 10, 11, 12, 13	307	-	307



**Kindly Note:** This drawing is only for presentation purpose in order to suggest furniture placement ■ Structural columns are not shown in the above drawings. Please refer to RCC drawings for the same ■ Shops & Office sizes include the plaster & skirting thickness hence might be smaller by about 3-5%.



# THE AVENUE

HINJEWADI

## LEVEL - 2



Shop No.	Carpet Area	Loft	Total Carpet Area
	sq.ft	sq.ft	sq.ft
14	255	129	384
15, 16, 17, 18, 19, 20, 21, 22, 23, 24, 25, 26	307	149	456
27	329	161	490
28, 29, 30	292	143	435
31	389	185	574
32	433	195	628
33	614	300	914

**Kindly Note:** This drawing is only for presentation purpose in order to suggest furniture placement ■ Structural columns are not shown in the above drawings. Please refer to RCC drawings for the same ■ Shops & Office sizes include the plaster & skirting thickness hence might be smaller by about 3-5%.



# THE AVENUE

HINJEWADI

## LEVEL - 3



Shop No.	Carpet Area	Balcony	Total Carpet Area
	sq.ft	sq.ft	sq.ft
34	255	-	255
35, 36, 37, 38, 39, 40 41, 42, 43, 44, 45, 46	307	-	307
47	326	54	380
48, 49, 50	292	52	344
51	389	82	471
52	433	69	502
53	614	90	704

**Kindly Note:** This drawing is only for presentation purpose in order to suggest furniture placement ■ Structural columns are not shown in the above drawings. Please refer to RCC drawings for the same ■ Shops & Office sizes include the plaster & skirting thickness hence might be smaller by about 3-5%.





# THE AVENUE

HINJEWADI

## INTERNAL SPECIFICATIONS

### Structure

- Earthquake Resistant RCC structure.

### Walls

- 6" Thick Wall for external & 5" internal wall.

### Plaster

- Sand faced Plaster for external surfaces.
- Gypsum / Putty & plaster for internal surfaces.

### Flooring

- 800 x 800 mm vitrified tiles.
- Anti-Skid flooring in all toilets.
- Anti-skid flooring for terraces and dry balcony.

### Doors:

- Flush door both side laminated for offices.
- Rolling Shutters for Shops
- Flush door both side laminated for toilets.

### Windows

- 2/3 Track Powder Coated Aluminium Sliding Window.

### Electrification

- Concealed electrification with circuit breaker.
- Set of Legrand or equivalent make Switches.

### Toilet/Washroom

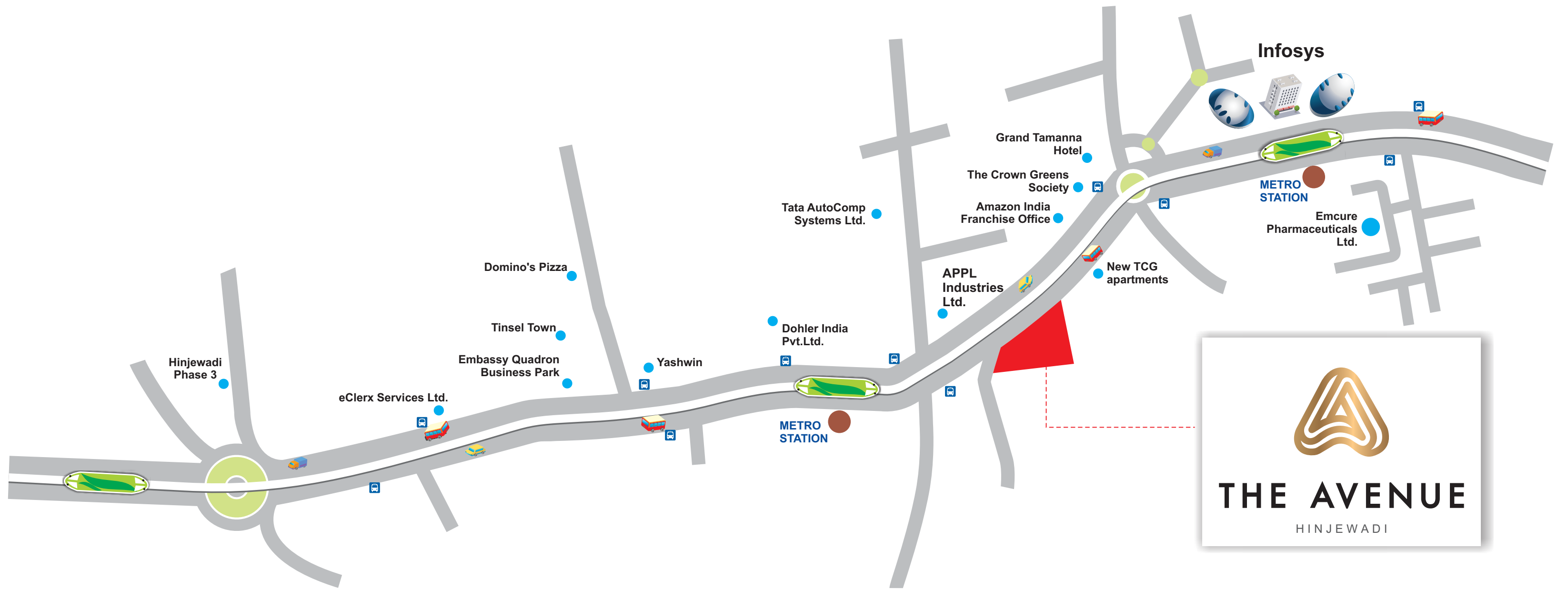
- Double coat water proofing with chemical treatment to all toilets & terraces.
- Jaquar or equivalent make sanitary ware.
- Jaquar or equivalent make C.P Fittings.
- Provision for exhaust fan.

### Paint

- Asian/Dulux/Berger or equivalent OBD paint for internal
- Asian/Dulux/Berger or equivalent exterior paint for external

## AMENITIES

- 3 Lifts (Schindler/Otis or Equivalent)
- Fire Fighting System for Building
- LED lights in common area / lobby / parking
- Generator back-up for lifts and common area
- Provision for Invertors



**THE AVENUE**  
HINJEWADI



SITE - SR. NO 336, RAJIV GANDHI INFOTECH PARK, NEAR INFOSYS, HINJEWADI PHASE - 2, PUNE- 411057

**9028381181 / 8380013281**



**THE AVENUE**  
Regn no.: P52100029508  
<http://maharera.mahaonline.gov.in>